

Davit Master®

Power to Lift - Quality to Last

5560 Ulmerton Road • Clearwater, Florida 33760
1-800-878-5560 • (727) 573-4414 • Fax (727) 572-0590

EPOCH 2000/3000/4500 INSTALLATION INSTRUCTIONS

IMPORTANT: Read this instruction manual carefully before installing the Davit Master EPOCH elevator system. REFER TO LOCAL BUILDING CODES FOR EXACT REQUIREMENTS. The following instructions indicate the minimum requirements necessary for installing the EPOCH to a seawall, bulkhead or piling. Each situation must be evaluated based on existing conditions. Davit Master is NOT responsible for the integrity of the dock, seawall, bulkhead or piling.

INSTALLING THE EPOCH TO A CONCRETE SEAWALL

Preparing the Seawall for Proper Installation of the EPOCH

1. (Refer to Fig. 1) Dig a hole directly behind the seawall cap, large enough to accommodate the needed concrete. Amount of concrete ALWAYS depends on the condition of the existing seawall. REFER TO LOCAL CODES.

NOTE: A raised pour foundation should be used if additional height is needed for the craft to clear high waters.

Installing Rebar and Base Bolts

1. Install REBAR (5/8") and anchor BASE BOLTS (refer to bolt hole pattern Fig. 2) per local building code requirements. Use a base template to hold base bolts in their proper position while attaching the base bolts to the rebar.

NOTE: The base template (representing the actual base) must be placed as near to the forward edge of the seawall cap as possible.

2. (See Fig. 1) Holes should be drilled in the seawall cap to accommodate the front base bolts.

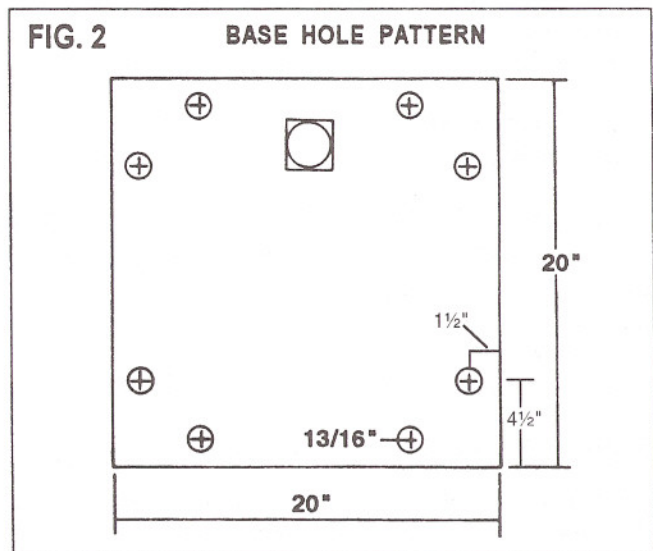
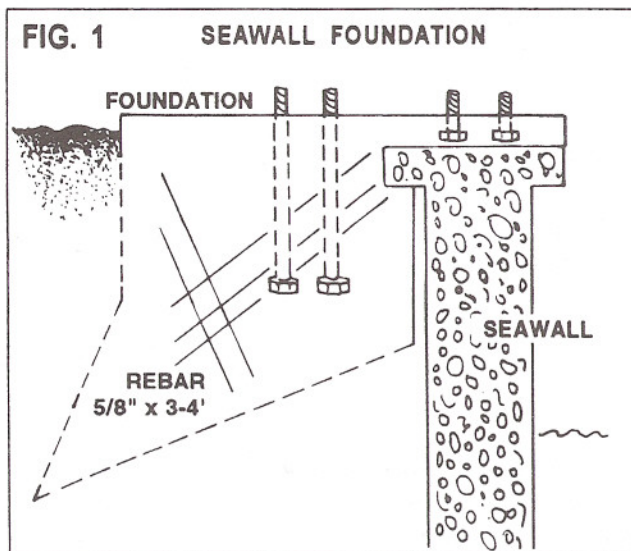
Pouring a Flat, Level Concrete Foundation and Installing the Bases

1. Pour the concrete, then level the concrete even with the seawall cap using front to back and side to side strokes.

NOTE: The foundation must be level to properly install the EPOCH base.

2. Allow the concrete to cure overnight before installing the EPOCH base.

NOTE: The EPOCH base can be bolted down the next day, but NO WEIGHT should be placed on the foundation until the concrete has cured for at least one week.

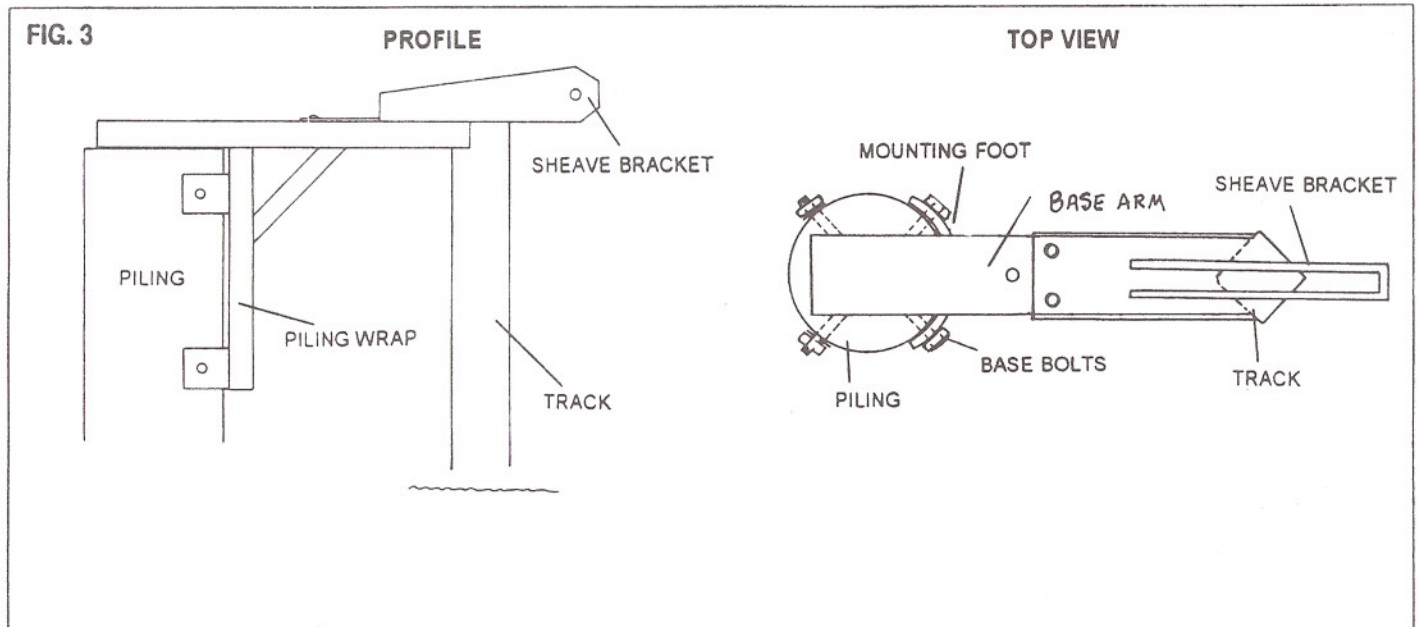


INSTALLING THE EPOCH TO A PILING

NOTE: It is necessary to make sure that any pilings used for the EPOCH installation be at least 36" taller than the dock level. This is so the EPOCH base can be properly installed. Piling dimension 12" minimum.

1. (See Fig. 3) Stand the pile mount base against the piling and mark the location of the bolt holes.
2. (See Fig. 3: Profile and Top View for bolt hole pattern) Drill through piling. Stand base up against piling and push bolts through the mounting feet on the base and through the piling. Tighten nuts down on the bolts.

NOTE: On new piling installations shrinkage should be expected. Bolts should be re-tightened at a later date.



MOUNTING THE BASE & INSTALLING TRACK TO BASE ARM

NOTE: It is important to get an accurate measurement of the Track length BEFORE ordering from the factory. If you have measured properly, you should not need to trim the Track unless you hit rock.

Determining the Length of the Track

1. Get a measurement from the seawall or dock to the seabed. Depending on how soft the seabed is, add approximately 4 feet for penetration, then add 3 feet for base.

NOTE: Add a few more feet if the seabed is very soft.

Installing the Base

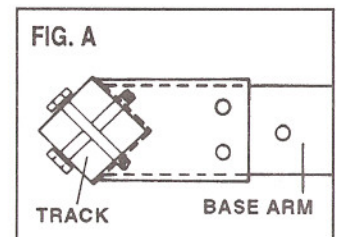
1. Position the Base on your prepared foundation and bolt securely into place.

Installing the Track

1. Install the Track into the seabed leaving 3 feet above the dock or seawall.
2. (See Fig. A) Position the track in the notch of the base arm. Make sure the track is lined up properly.
3. Jet or drive the track into the seabed. Bolt the Track to the Base Arm with the 1/2" bolts.

Installing the Kicker (This can be done once the EPOCH is completely installed.)

1. (See Fig. 5) Bolt the Kicker around the Track (below the Wheel Assembly) and let it slide down to seabed.
- NOTE:** Make sure the Kicker Support Arm is well positioned against the seawall or piling.



INSTALLING THE WINCH

NOTE: NEVER LEAVE THE WINCH SYSTEM RUNNING WHILE UNATTENDED.

Mounting the Winch

1. (See Fig. 5) Mount the Direct-Drive Winch to the winch mount with the bolts provided.
Motor must face away from load.

RIGGING THE EPOCH ELEVATOR LIFT

NOTE: The Wheel Assembly (Sheave Bracket #2) should still be on the dock, seawall or barge while rigging.

1. (See Fig. 5) Attach cable to winch. Slide the free end of the cable through Sheave Bracket #1, then through Sheave Bracket #2 and then attach the cable end to the cable bolt (located on Sheave Bracket #1).
2. Bolt the sheaves (pulleys) into each Sheave Bracket with the cable running over the sheave on (Sheave Bracket #1) and under the sheave on (Sheave Bracket #2).
3. See installing rope lever switch at this time.

INSTALLING THE WHEEL ASSEMBLY & CRADLE ARMS

Installing the Wheel Assembly to the Track

1. (See Fig. 5) Swing the Wheel Assembly onto the track and raise to dock or seawall level.
2. Bolt the Upper-Wheel Assembly to the top of the Wheel Assembly with the (4) 1/2" bolts provided.
NOTE: The Upper-Wheel Assembly can be mounted to the Wheel Assembly with one bolt on, but loose. Then swing the Upper-Wheel Assembly around (and behind) the track and then fasten all the bolts down tightly.

Installing the Cradle Arms

1. (See Fig. 5-Insert A) Slide each Cradle Arm through the opening on the extended arm of the Wheel Assembly and secure in place with bolts provided.

INSTALLING THE CHOCKING SYSTEM

Installing the Chock Brackets to the Cradle Arms

1. (See Fig. 5) The flat surface of the Chock Bracket will face toward the Chock Board. Bolt the first set of Chock Brackets closest to the Wheel Assembly and space the second set to fit the boat hull, shaft or hull plates.
NOTE: There are no lefts or rights to the Chock Brackets - just rotate them.
2. Hook the bent side of the Mounting Foot over the flange of the Cradle Arm Beam. Next, pick the set of holes closest to the flange edge and use two of the 1/2" bolts provided. Place the bolts through holes and thread down.
3. Place the Bar Clip with slot over bolt from underside and nut up hand tight. Slide the Bar Clip as far into the flange of beam as it will go before tightening nut. Repeat for each Chock Bracket.

Installing the Chock Boards to the Chock Brackets

1. (See Fig. 5) Bolt carpeted Chock Boards to the inside of the Chock Brackets.
NOTE: You can order pre-assembled carpeted lumber from DavitMaster.

INSTALLING THE ROPE LEVER SWITCHING SYSTEM & RMC

Mounting the Rope Lever Switch

1. (See Fig. 4) Unbolt sheave and dead end and attach switch bracket to the bolts on the sheave bracket. Attach the rope lever switch to the other end of the switch bracket.
2. Tie one end of the nylon rope to one side of the Rope Lever Switch Bar. Do this on both sides of the Rope Lever Switch.

Mounting the RMC (Radio Motor Controls)

1. (Not shown on Fig. 5 diagram) Mount the RMC control box in a convenient location.
NOTE: The Rope Lever switching system is not necessary when a RMC unit is used. Switches are located on the RMC box and the EPOCH can now be operated with a handheld transmitter.

EPOCH 2000 INSTALLED TO A SEAWALL

FIG. 4 (Installing the Rope Lever Switch)

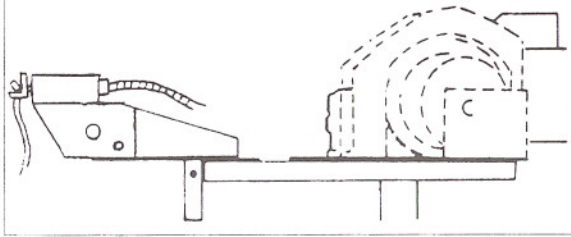


FIG. 5

