

# MARINE ELEVATOR

DAVIT MASTER

## PRE-ORDER CHECKLIST

In order that we may process your Marine Elevator order correctly, please complete ALL questions on this PRE-ORDER CHECKLIST. To answer numbers 4, 5, 6, 7 & 8 refer to the reference illustrations on the back of this form. PLEASE BE SPECIFIC.

FOR OFFICE USE ONLY: Work Order #: \_\_\_\_\_ Ship Date: \_\_\_\_\_

SOLD TO: \_\_\_\_\_ SHIP TO: \_\_\_\_\_

\_\_\_\_\_

\_\_\_\_\_

### Please Answer the following questions:

1. Marine Elevator capacity (check ✓): 4,000 \_\_\_\_\_ 8,000 \_\_\_\_\_ 12,000 \_\_\_\_\_ 14,000 \_\_\_\_\_

4,000 2 motor \_\_\_\_\_ 8,000 2 motor \_\_\_\_\_

2. Will your Marine Elevator be installed on a seawall or pilings? \_\_\_\_\_

2a. Diameter of piling \_\_\_\_\_

3. Slope of Marine Elevator (circle):

- 4,000 lb.: 0° 15° 30° 45°
- 8,000 lb.: 0° 15° 30° 45°
- 12,000 lb.: 0° 15° 30° 45°
- 14,000 lb.: 0° 15° 30° 45°

\*4. Length of track from reference point (A) to mud or sand bottom {see back for (A)}: \_\_\_\_\_

\*5. Length of penetration of track into the mud or sand bottom: \_\_\_\_\_

\*6. Seawall Installations ONLY: Distance (in inches) from edge of base to front edge of seawall cap. {See illustration at right for reference}.

Length in inches: \_\_\_\_\_

\*7. Seawall Installations ONLY: Amount of overhang of seawall cap.

Length in inches: \_\_\_\_\_

\*8. Length of span between tracks. (Give specific length in feet and inches):

Allowable range per system:

- 4,000 lb.: (8' - 9') \_\_\_\_\_
- 8,000 lb.: (9' - 10') \_\_\_\_\_
- 12,000 lb.: (10 - 12') \_\_\_\_\_
- 14,000 lb.: (10 - 12') \_\_\_\_\_

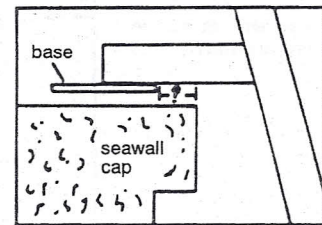
9. Beam of boat (width in feet and inches): \_\_\_\_\_

9a. Length of Arms: \_\_\_\_\_

10. Check (✓) if you need pipe guides for outside of boat (this is an additional cost): \_\_\_\_\_

11. Any additional information or special instructions (ex: tight slip, silt bottom, etc): \_\_\_\_\_

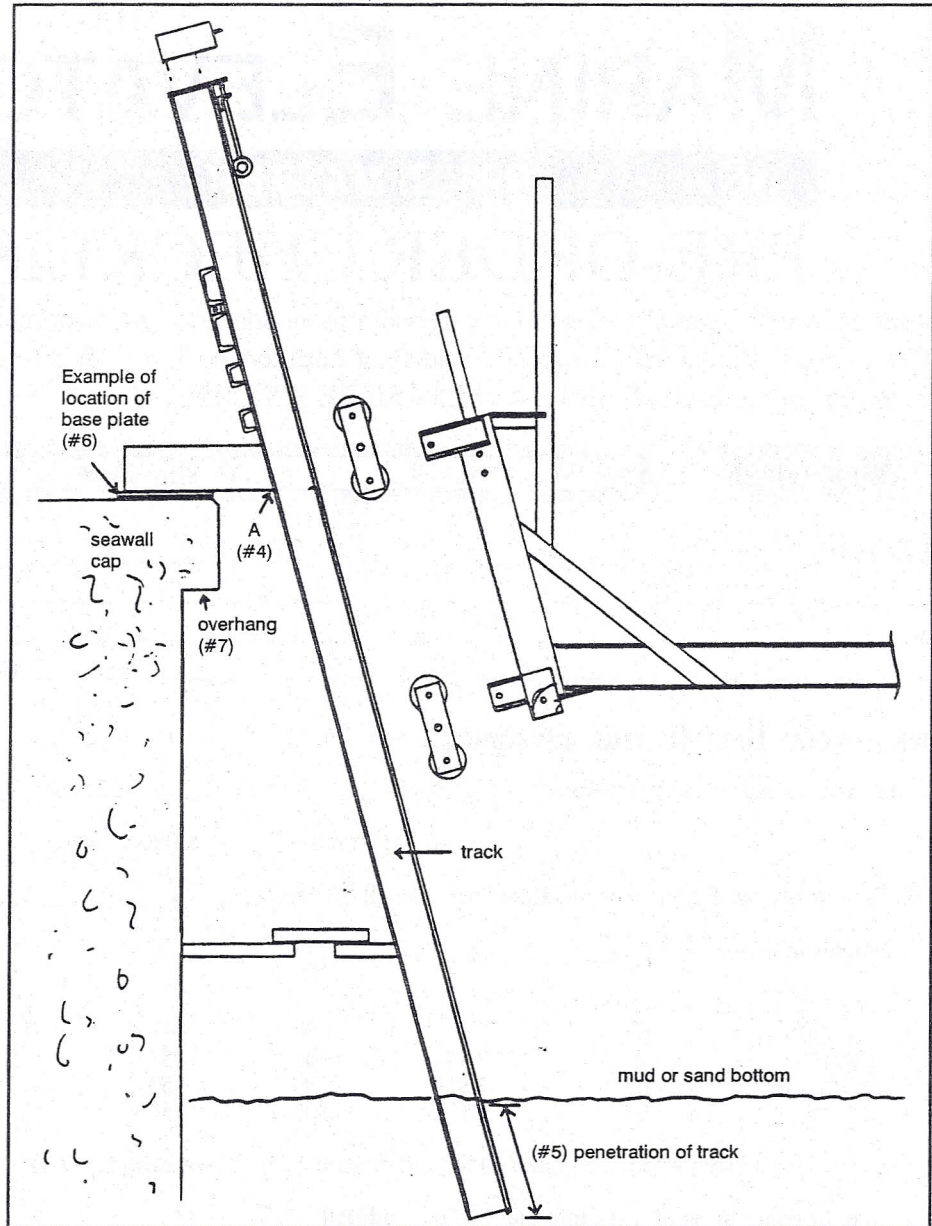
12. Remote Control: Yes \_\_\_\_\_ No \_\_\_\_\_



(This is just for reference)

\* See reference Illustration on back.

Reference Illustration  
for Questions  
4, 5, 6, 7, 8.



Reference Illustration  
for Question 8.

